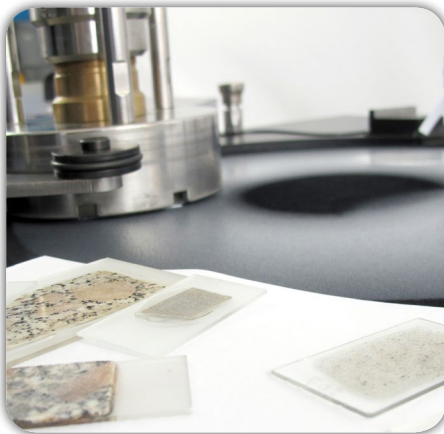


Kemet

PRECISION LAPPING AND POLISHING SYSTEMS



Contents

LAPPING MACHINES 1-10

15" to 120" Machines	1-5
Spherical Lapping	6
Super Mirror Finish Polishing	7
Geological Thin Section Lapping	8-9
Specialist Lapping Machines	10

LAPPING CONSUMABLES 11-20

Lapping Plates	11-12
Conditioning Rings	12
Diamond Compound / Paste	13
Liquid Diamond	13-14
Lubricating Fluids	15
Conventional Abrasives	15
Lapping Oil	16
Abrasive Pastes & Powders	16
Lapping Film	17
Polishing Pads / Cloths	18
Hand Lapping Plates	19
Diamond Grinding Cloths	19
Workholding & Fixtures	20
Polishing Stand with Paper	20

LAPPING ACCESSORIES 21-24

Dispenser Systems	21-22
Lapping Machine Maintenance	22
Flatness Measuring Equipment	22-23
Portable / Hand Lapping Kits	24

CLEANING & TECHNICAL SUPPORT 25-28

Ultrasonic Cleaners	25-26
Lapping Service	27
Kemet Technical Support	28



Ordering Information

Telephone:

+44(0)1622 607507

Sales Desk - Direct Line

+44(0)1622 755287

Enquiries & Technical Support

Email:

sales@kemet.co.uk

Website:

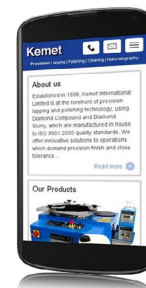
www.kemet.co.uk

Fax:

+44(0)1622 670915

Post

Kemet International Ltd
Cuxton Road, Parkwood Trading Estate,
Maidstone, Kent ME15 9NJ, UK



Precision Lapping Services at
Great prices, even for small
volumes





Kemet Precision Lapping and Polishing Systems

Since 1938, Kemet has been at the forefront of precision polishing technology, producing quality diamond pastes, slurries and composite lapping/polishing materials in our purpose built facilities.

Kemet Precision Lapping and Polishing Systems offer the most efficient and reliable method of producing precise surface geometry and finish whether flat, contoured or spherical. Our machines and systems are at the forefront of today's advanced lapping technology, especially when used with Kemet Diamond products. Kemet Diamond quality and grading enables reliable precision lapping to be performed in production situations.

Now a truly international organisation, Kemet's activities span the world, spearheaded by companies in nine countries, all sharing the same commitment to customer support. This, along with more than 75 years' experience, means Kemet are here to provide you with the technical support to overcome all your lapping, polishing and cleaning challenges.

Industries and Applications

Aerospace

Pumps and Valves
Turbine Parts
Engine Assemblies
Spacers

Technical Ceramics

Alumina - Zirconia
Silicon Carbide
Piezo Ceramics
Ferrite

Data Storage

Disc Drive Heads
CD Moulds
Laminations
Smart Phones

Tool and Die

Moulds and Inserts
Printing Plates
Slitter Knives
Extrusion Dies

Electro Optics

Plano Optics
Laser Rods and Prisms
Fibre Optics
Sensors
Sapphire
ALN

Automotive

Diesel Injectors
Airbag Initiators
Piston Rings
Fuel Pumps

Pumps & Valves

Fuel Pumps
Hydraulic Pumps
Mechanical Seals
Gate Valves

Medical Devices

Fibre Scopes
Surgical Instruments
Hip and Knee Joints
Pacemaker Parts



Lapping Machines

Kemet's Advanced Lapping Technology

Kemet offers a comprehensive range of standard lapping and polishing systems for use across all industrial sectors. Special purpose machines can also be developed for specific applications.

Benefits:

- Faster polishing process
- One operation surface finish
- Faster material removal
- Pre set parameters
- Reduced rejections
- Semi skilled operation
- Significant reduction in lapping costs
- Reduced inspection requirements
- Optimum geometry and surface finish
- Better utilisation of machine time
- Cleaner environment conditions

Lapping Machine Options



Open Face

The open face machines are for use where work pieces are either large in size and can be lapped under their own weight or where pressure application by hand weights is sufficient.



Pneumatic Lift

The pneumatic lift machines will raise and lower the weights and also apply pressure where necessary. All are fitted with mandatory safety controls.

Kemet Lapping Machine Capacity Chart

Components per conditioning ring based on typical loading of approximately 60% ring surface area.

Machine Model (No of Rings)	Diameter of Parts (mm)																											
	6	7.5	9	10.5	12	13.5	15	18	22	26	30	34	38	42	46	50	54	60	70	80	90	100	110	120	130	140		
15 (3 Rings)	275	175	118	86	60	50	40	27	18	12	10	8	6	5	4	3	2	2	2	1	1	1	1	1	1	1	1	
20 (3 Rings)	-	-	-	-	150	114	90	63	39	33	21	17	14	10	9	7	6	5	3	3	2	2	1	1	1	1	1	
24 (3 Rings)	-	-	-	-	210	165	132	87	57	42	33	24	18	15	13	10	9	7	5	4	3	3	2	2	1	1	1	
24 (4 Rings)	-	-	-	-	150	114	90	63	39	33	21	17	14	10	9	7	6	5	3	3	2	2	1	1	1	1	1	
36 (3 Rings)	-	-	-	-	-	-	-	204	93	93	69	60	42	33	29	24	21	17	12	10	7	6	5	4	3	2	2	
36 (4 Rings)	-	-	-	-	-	-	-	156	72	72	54	39	33	25	33	20	15	12	10	8	5	5	3	2	2	2	2	
48 (4 Rings)	-	-	-	-	-	-	-	-	132	132	99	75	60	48	39	33	29	24	17	14	12	8	7	5	5	4	4	
56 (4 Rings)	-	-	-	-	-	-	-	-	204	204	150	117	100	76	62	52	44	35	26	20	16	12	10	8	8	6	6	
72 (4 Rings)	-	-	-	-	-	-	-	-	-	-	-	204	164	132	108	92	78	62	44	35	26	21	18	16	14	10	10	
84 (4 Rings)	-	-	-	-	-	-	-	-	-	-	-	-	-	185	152	129	109	88	63	47	38	30	24	20	17	15	15	

The above data is for using standard loading procedures. It is often possible to extend the capacity of a machine utilising special workholding arrangements and fixtures.

Conditioning Ring Spec		Machine Model								
		15	20	24	36	48	56	72	84	120
Inside Diameter (mm)	3 Rings	140	191	248	368	505	578	-	-	-
	4 Rings	-	-	209	322	432	530	692	813	1016

Kemet 15/20 Models

The bench-mounted Kemet 15 and 20 Lapping Machines have a rigid metal construction with a height-adjustable worktable. The machines incorporate a digital Process Timer and a fully automatic Liquid Diamond Dispensing System.

Features & Benefits:

- Variable speed
- Bench mounted
- Produces optically flat surfaces with high precision surface finish
- Fully controllable Kemet Electronic Dispensing System accurately meters diamond abrasive onto the lapping plate - Reduces lapping costs
- Only small quantities of diamond abrasive and non-toxic fluids are used - Reduces waste
- Built in abrasive system for conditioning Kemet Composite Plates
- Easily transportable
- Electrical System complies with EN 60 204
- Easy to adapt for special lapping applications

Options:

- Lift off disc system on model 15"
- Fixed speed
- Pneumatic lift on model 20"

Other Versions:

- Col-K Chemical polishing version (see page 7)
- Clipper Blade sharpening machine



Recommended Accessories	Machine Model	
	15	20
Cast Iron Conditioning Rings - Solid - Set of 3	360204	360818
Cast Iron Conditioning Rings - Serrated - Set of 3	360203	361027
Zytel Roller Bearing Assemblies - Set of 6	360212	360212
O-rings for Zytel Bearings - Set of 6	360270	360270
Flatness Gauge	361304	

Recommended Consumables	Machine Model	
	15	20
Cast Iron Serrated Lapping Plate (Pre-lapped)	362400	362402
Cast Iron Solid Lapping Plate (Pre-lapped)	362401	362403
Kemet Copper Lapping Plate	351102	351103
Kemet Copper SP2 Lapping Plate	351159	351964
Kemet Iron Lapping Plate	351002	351081
Kemet PR3 Lapping Plate	351340	351374
Kemet Tin Lapping Plate	351305	351320
Kemet XL Lapping Plate	351356	351375
Kemet XP Lapping Plate	351202	351266

Huge range of other accessories and consumables available for the Kemet 15 & 20 Models

Machine Model		15	20
Lapping Plate outside Diameter		381 mm	508 mm
Lapping Plate Speed		70 rpm	70 rpm
No. of Conditioning Rings		3	3
Conditioning Ring inside Diameter		140 mm	191 mm
Max load per Conditioning ring		39 Kg	53 Kg
Height of Open Face Machine		670 mm	700 mm
Height of Pneumatic Lift Machine		N/A	965 mm
Working Height		310 mm	385 mm
Depth of Machine		660 mm	780 mm
Width of Machine		760 mm	883 mm
Standard Electrical Supply		220v-1Ph-50Hz or 380v or 415v 3Ph-50Hz	
Main Drive Motor		0.37 kW	0.75 kW
Abrasive pump motor		0.18 kW	0.18 kW
Approx. Weight	Open Face	136 kg	200 kg
	Pneumatic	N/A	385 kg

Lift Off Disc System	Machine Model	
	15	20
Aluminium Drive Plate	361002	362255
Aluminium Lift Off Disc	361001	362290
Kemet Iron Lift Off Disc	351025	E09714
Kemet Copper Lift Off Disc	351121	E09715
Kemet XP Lift Off Disc	351226	E10063
Kemet Tin Lift Off Disc	351314	E10103

Kemet 24/36 Models

Both Kemet 24 and 36 machines have rigid welded tubular section steel frames, supporting the gearbox, drive motor and worktable. With the option of a diamond dispensing system they also house an integral abrasive compound feed and waste tanks behind lift-off panels. The Kemet 36 machine incorporates a soft starting feature, which smoothly accelerates the Kemet Composite or cast iron lapping plate from stand still to full speed (optional extra for Kemet 24).



Features & Benefits:

- Produces optically flat surfaces with high precision surface finish
- Fully controllable Kemet Electronic Dispensing System accurately meters diamond abrasive onto the Kemet Composite Lapping Plate, reducing lapping costs and waste
- Built in abrasive system for conditioning Kemet Composite Lapping Plates
- Suitable for large parts or large volume production
- Electrical System complies with EN 60 204

Options:

- Variable speed
- Temperature control
- 3 or 4 conditioning rings
- Col-K chemical polishing versions
- Light curtain or full Perspex guarding available

Option	Open Face		Pneumatic Lift	
Machine Model	24	36	24	36
Height	920 mm	960 mm	1925 mm	1960 mm
Working Height	-	-	1150 mm	1270 mm
Width	1200 mm	1435 mm	1240 mm	1505 mm
Depth	1350 mm	1640 mm	1350 mm	1640 mm
Approx. Weight	575 kg	1165kg	700kg	1250kg
Lapping Plate outside Diameter	610 mm	914 mm	610 mm	914 mm
Lapping Plate Speed	58 rpm	58 rpm	58 rpm	58 rpm
N° of Conditioning Rings	3 or 4	3 or 4	3 or 4	3 or 4
Conditioning Ring inside Diameter	3 ring	248 mm	368 mm	248 mm
	4 ring	210 mm	322 mm	210 mm
Max load per Conditioning ring	3 ring	250 Kg	350 Kg	250 Kg
	4 ring	200 Kg	300 Kg	200 Kg
Main Drive Motor	1.5 kW	4 kW	1.5 kW	4 kW
Abrasive pump motor	0.18 kW	0.18 kW	0.18 kW	0.18 kW
Air Requirements	4 Bar min	4 Bar min	4 Bar min	4 Bar min
Standard Electrical Supply	220v or 380v or 415v 3Ph-50Hz			

Electronic Dispensing Equipment Standard on all above Models (see page 21)

Kemet 40 also available with Kemet Lapping Plate outside diameter 1016mm. Three cast iron serrated conditioning rings, inside diameter 406mm.

Recommended Accessories	Machine Model	
	24	36
Cast Iron Conditioning Rings - Solid for 3 Ring Machine - Set of 3	360679	360186
Cast Iron Conditioning Rings - Serrated for 3 Ring Machine - Set of 3	360208	360278
Cast Iron Conditioning Rings - Solid for 4 Ring Machine - Set of 4	360680	360681
Cast Iron Conditioning Rings - Serrated for 4 Ring Machine - Set of 4	360274	360682
Zytel Roller Bearing Assemblies - Set of 6	360214	-
O-rings for Zytel Bearings - Set of 6	360672	360270
Roller Bearing Assemblies - Set of 6	360213	360259
O-rings for Roller Bearings - Set of 24	-	360659
Flatness Gauge	361304	

Recommended Consumables	Machine Model	
	24	36
Cast Iron Serrated Lapping Plate (Pre-lapped)	362404	362406
Cast Iron Solid Lapping Plate (Pre-lapped)	362405	362407
Kemet Copper Lapping Plate	351106	351124
Kemet Copper SP2 Lapping Plate	351177	351965
Kemet Iron Lapping Plate	351006	351010
Kemet PR3 Lapping Plate	351357	351343
Kemet Tin Lapping Plate	351306	351315
Kemet XL Lapping Plate	351376	351377
Kemet XP Lapping Plate	351206	351227

Huge range of other accessories and consumables available for the Kemet 24 & 36 Models

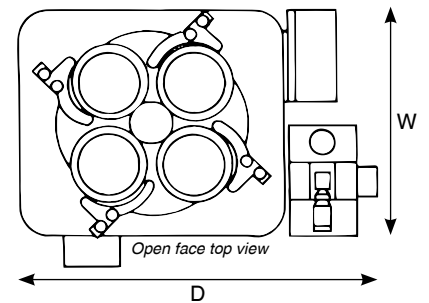
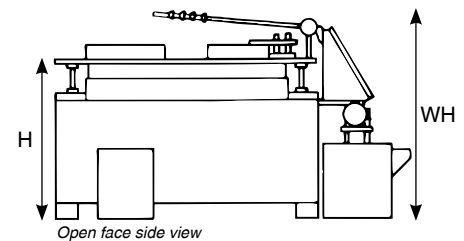
Kemet 48/56 Models

These Precision Diamond Flat Lapping & Polishing Machines, are available as open face and pneumatic lift with a diamond dispensing system. Equipped with a serrated lapping plate consisting of 16 segments for the Kemet 48 and 24 segments for the Kemet 56, the individual cast iron segments are faced with Kemet Composite material bolted to a support plate.

Features & Benefits:

- Higher capacity
- 3 or 4 conditioning rings
- Heavier and larger parts (up to 505 mm for Kemet 48 and 578 mm for Kemet 56)
- Water cooling option available

Option	Open Face		Pneumatic Lift	
Machine Model	48	56	48	56
Height (H)	1010 mm	1030mm	2350 mm	2260 mm
Working Height (WH)	-	-	1390 mm	1400 mm
Width (W)	1510 mm	1700 mm	1510 mm	1700 mm
Depth (D)	2000 mm	2020 mm	2520 mm	2520 mm
Approx. Weight	3400 kg	4100 kg	4000 kg	5000 kg
Lapping Plate outside Diameter	1219 mm	1422 mm	1219 mm	1422 mm
Lapping Plate Speed	48 rpm	48 rpm	48 rpm	48 rpm
Conditioning Ring inside Diameter	3 ring	505 mm	505 mm	578 mm
	4 ring	432 mm	432 mm	530 mm
Max load per Conditioning ring	3 ring	375 Kg	375 Kg	400 Kg
	4 ring	325 Kg	325 Kg	350 Kg
Main Drive Motor	7.5 kW	11 kW	7.5 kW	11 kW
Abrasive pump motor	0.18 kW	0.18 kW	0.18 kW	0.18 kW
Abrasive Tank capacity	115 Litres	115 Litres	115 Litres	115 Litres
Waste tank capacity	37 Litres	37 Litres	37 Litres	37 Litres
Standard Electrical Supply	220V or 380V or 415V 3 Ph 50Hz			



Recommended Accessories	Machine Model	
	48	56
Cast Iron Conditioning Rings - Solid for 4 Ring Machine - Set of 4	360235	360749
Cast Iron Conditioning Rings - Solid for 3 Ring Machine - Set of 3	360662	
Cast Iron Conditioning Rings - Serrated for 4 Ring Machine - Set of 4	360642	
Cast Iron Conditioning Rings - Serrated for 3 Ring Machine - Set of 3	360833	360910
Roller Bar Bearing Assembly	360729	360869
Flatness Gauge	361304	

Recommended Consumables	Machine Model	
	48	56
Cast Iron Segments for 3 Rings - Set of 16	360265	361860
Cast Iron Segments for 4 Rings - Set of 16	360776	362216

Huge range of other accessories and consumables available for the Kemet 48 & 56 Models



Kemet 72/84/120 Models

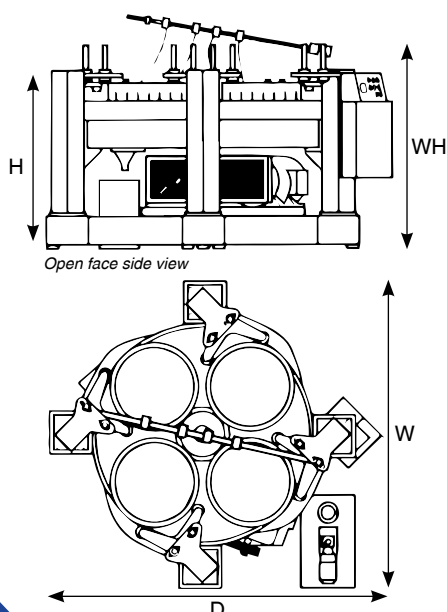
For larger lapping applications Kemet offer machines with a 72", 84" or 120" plate.

Features & Benefits:

- Set within a mesh guard, a side mounted motor transmits the drive via multiple v-belts to a mechanical reduction gearbox at the centre of a cruciform shaped steel structure.
- Four stations, the roller yokes mounted on hollow section upright columns at the end of each arm, which also support the trough around the lap plate.
- Electronic soft start to smooth accelerate the lap plate to full speed is time adjustable to suit individual process conditions.
- Suitable for use with conventional abrasive slurries or Kemet Diamond slurries.
- Free-standing conventional abrasive reservoir/stirrer/pump supplies four individually adjustable feeds to each of the stations.
- Electronic diamond dispenser and stirrer unit provides fully controlled metering of liquid diamond and lubricating fluid to each station, via dispensing bars and spray heads, to ensure even distribution and minimise consumable costs and waste.
- Water cooling option available



Open Face Version



Option	Open Face			Pneumatic Lift		
Machine Model	72	84	120	72	84	120
Approx. Height (H)	1350 mm	1500 mm	*	2764 mm	*	*
Working Height (WH)	-	-	-	*	*	*
Approx. Width (W)	3026 mm	2600 mm	*	3026 mm	2600 mm	*
Approx. Depth (D)	3073 mm	2600 mm	*	3073 mm	2600 mm	*
Approx. Weight	6000 kg	9000 kg	*	10000 kg	12000 kg	*
Lapping Plate outside Ø	1829 mm	2134 mm	3000 mm	1829 mm	2134 mm	3000 mm
Approx. Lapping Plate Speed	30 rpm	20 rpm	18 rpm	36 rpm	20 rpm	18 rpm
No. of Conditioning Rings	4	4	4	4	4	4
Conditioning Ring inside Ø	692 mm	813 mm	1025 mm	692 mm	813 mm	1025 mm
Max load per Conditioning ring	2000 Kg	2250 Kg	*	2000 Kg	2250 Kg	*
Main Drive Motor	15 kW	30 kW	*	15 kW	30 kW	*
Abrasive pump motor	0.18 kW	0.18 kW	0.18 kW	0.18 kW	0.18 kW	0.18 kW
Abrasive Tank capacity	117 Litres	117 Litres	132 Litres	117 Litres	117 Litres	132 Litres
Waste tank capacity	37 Litres	37 Litres	57 Litres	37 Litres	37 Litres	57 Litres
Standard Electrical Supply	220V or 380V or 415V 3 Ph 50Hz					

* Designed to customer specification

KemiSphere - Bench Top Spherical Lapping Machine

The KemiSphere is a small single station spherical lapping and polishing machine ideal for either matching 2 spherical forms together or, with appropriate tooling, it has the ability to lap and polish spherical forms to better than 5µm roundness with a mirror finish. It's a perfect replacement for jobs currently hand lapped together, and its bench top design makes it a useful addition to any workshop involved in spherical lapping.

Features & Benefits:

- 3 motors with independent variable speed control
- Simple tooling change
- HMI control
- 20 programme memory
- Low running costs
- Manual and jog facility provided for setting
- Fully guarded with interlocks and safety circuit
- Single button process start
- Eye level controls
- Dimensions 400 (W) x 500 (D) x 900 (H) mm
- CE marked
- Electrical supply 230V-single phase-50Hz
- Sweep setting from 0-45 degrees fully adjustable
- Clock wise and counter clockwise rotation of lap motor
- Digital Timer
- Product code: 359875



Kemet Spherical Lapping Machine

The Kemet Spherical Lapping Machine laps and polishes pre-machined spherical balls and cups to a mirror finish with roundness usually better than 3 microns.

Features & Benefits:

- 6 motors all with independent variable speed to provide complete control
- Size: 1600 (W) x 820 (D) x 2500 (H) mm
- Lapping and polishing pressures applied pneumatically
- Simple change from ball to cup polishing action
- Average process time less than 5 mins
- Manual and jog facility provided for setting up
- Fully guarded with auto lifting door access
- Comes complete with initial tooling set
- Full manual and training provided
- Low running costs
- Dual process timers
- Single button process start
- Lighting provided
- Smooth and silent running
- CE marked
- Electrical supply 230Vsingle phase-50Hz
- Air: 3 bar max



KemCol 15 - Super Finishing Machine

The KemCol 15 Super Finishing machine is based on the popular Kemet 15 lapping and polishing machine, but incorporates stainless steel elements in place of painted components for longer life, and contamination free polishing. It comes as standard with an integrated Kemet aKu-Disp fully programmable peristaltic pump system, and either ceramic faced, or stainless steel conditioning rings. The machine is ideal for chemo mechanical polishing and Cerium Oxide based polishing applications.



Technical Specifications

Height	400 mm
Working Height	310 mm
Width	800 mm
Depth	650 mm
Nett Weight	90Kgs
Polishing Pad Diameter	380 mm
No of conditioning rings	3
Inside diameter of conditioning rings	140 mm
Main Motor	0.37kW
Product code	359876



Mirror Finish

Features & Benefits:

- Stainless steel worktable surrounding polishing pad
- Polished stainless steel yokes for easier cleaning
- Stainless steel drive plate
- Aluminium lift off disc system optional
- Ceramic faced or stainless steel conditioning rings for contamination free polishing
- aKu-Disp fully programmable peristaltic pump unit fitted as standard
- Suitable for Kemet magnetic polishing pad system for easy pad change

KemCol 15 Recommended Accessories



aKu-Disp	Code
Spare Peristaltic Head Unit with Tube	362520
aKu-Disp Feedarm	362514
Spare Tubing (1 meter)	363109

The aKu-Disp is designed to work in conjunction with the lapping machine. It links to the machines main timer system and the stirrer function operates as soon as power is on the unit and has manually operated variable speed controls for both the pump and stirrer.

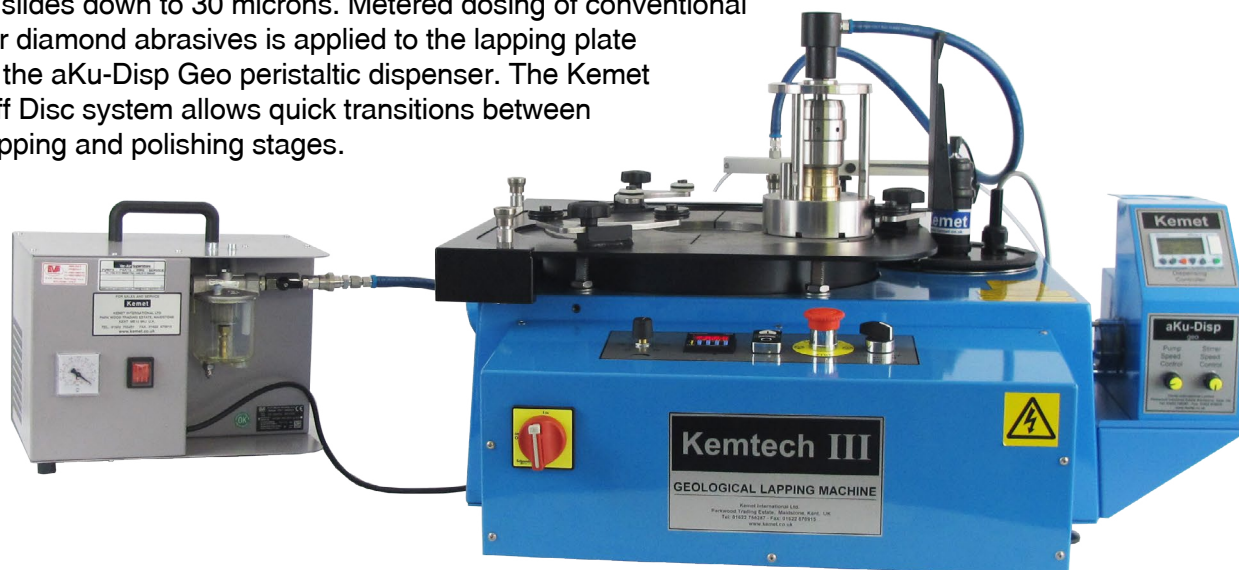
Description	Code
Set of 3 Ceramic Faced Conditioning Rings	361522
Stainless Steel Plastic Faced Conditioning Rings	362235
380 mm Stainless Steel Support Plate (For Polishing Pads)	362033
380 mm Aluminium Lift Off Disc	361001
380 mm Aluminium Drive Plate	361002
380 mm Thin Metal Disc (For use with magnetic system)	342563
380 mm Magnetic Disc	345773

Recommended Consumables	Code
380 mm CHEM-H Polyurethane Polishing Pad	341865
380 mm PSU-M Chemo-Textile Cloth for Cerium	341011
380 mm MRE Short Napped Final Polishing Pad	341715

Col-K Polishing Media	5 litres	10 litres	20 litres
Col-K	600212	600238	600204
Col-K (NC)	600199	600239	600202

Kemtech III Geological Lapping Machine

The Kemtech III Geological lapping machine is able to accurately lap and polish thin sections mounted on glass slides down to 30 microns. Metered dosing of conventional and/or diamond abrasives is applied to the lapping plate using the aKu-Disp Geo peristaltic dispenser. The Kemet Lift Off Disc system allows quick transitions between the lapping and polishing stages.



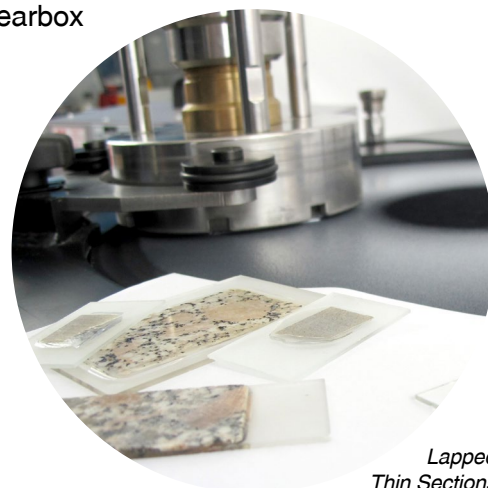
Technical Specifications

Height	400 mm
Working Height	310 mm
Width	800 mm
Depth	650 mm
Nett Weight	90Kgs
No of jig stations	3
Main Motor	0.37kW
Product code	359975

Also available in 20" with driven rings as an option.

Features & Benefits:

- aKu-Disp Geo accurate peristaltic dispensing system for metered dosing
- Capacity for up to 3 vacuum jigs with diamond faced stoppers
- Electronic digital timer with variable time ranges
- Sealed maintenance free reduction gearbox
- Integrated abrasive tank with stirrer
- Cast iron Serrated Lift Off Disc or Aluminium Lift Off Disc
- Variable Speed up to 70 rpm
- Water Trap and Filter
- Stand-alone vacuum pump



Lapped Thin Sections

Kemtech III Recommended Accessories

Description	Code
Set of 3 Cast Iron Serrated Conditioning Rings	360203
Set of 3 Plastic Faced Conditioning Rings	361521
380 mm Cast Iron Serrated Lift Off Plate	362433
380 mm Aluminium Lift Off Disc	361001
380 mm Aluminium Drive Plate	361002
380 mm Thin Metal Disc (For use with magnetic system)	345563
380 mm Magnetic Disc	345773

Recommended Consumables	Code
Green Silicon Carbide Powder F600 1Kg	361513
380 mm PSU-M Chemo-Textile Cloth	341011
380 mm MRE Short Napped Final Polishing Pad	341715
9WM diamond suspension (Water based mono diamond)	219009
6WM diamond suspension (Water based mono diamond)	219008
3WM diamond suspension (Water based mono diamond)	219006
1WM diamond suspension (Water based mono diamond)	219004

aKu-Disp	Code
Spare Peristaltic Head Unit with Tube	362520
aKu-Disp Feedarm	362514
Spare Tubing (1 meter)	363109

Vacuum Jigs (to suit slides)	Code
4 x (76 x 26 mm) or 2 x (76 x 51 mm)	362072A
6 x (52 x 26 mm)	362072B
1 x (100 x 100 mm)	362072C
6 x (48 x 28 mm)	362072D
3 x (45 x 60 mm)	362072E
Rotaid rotation assist post	362895
Setting stand	361986
Cast iron setting test block (127 mm diameter)	361773

The Kemet Vacuum Jig is a precision workholding and sizing fixture. The Jig is suitable for accurately sizing Geological thin sections, wafers, crystals and any precision parts where parallelism and precision finish are required.



Kemet Internal Lapping Machine

The Internal Lapping Machine has been designed to accurately lap internal valve faces. This lapping machine will process internal faces up to 300mm (3" to 16") in diameter, producing a flatness of 0.001mm. Depending on the material and the tooling, anything from a standard matt finish to a high mirror polish can be obtained. The Kemet Internal Lapping Machine can quickly be changed to a standard lapping machine, allowing the flatness of the laps, which generate the flatness of the recessed internal face, to be maintained on the same machine. This means that a single machine can produce the required flatness on the lap tooling and then generate the same flatness on the internal faces, a bonus in terms of cost and footprint.



Features & Benefits:

- Bespoke holding plate designed to customer/component requirements
- Yoke arm which can apply additional pressure when required
- Includes full set of laps to suit application
- Variable Speed up to 70 rpm
- Capable of processing valves from 3" - 16"
- Short process times & easy to use
- Integrally mounted high torque drive unit with 0.37kW (0.5HP) motor
- Sealed maintenance free reduction gearbox
- Electronic digital timer with variable time ranges
- Electrical: 230V-single phase-50Hz
- Product code: 359706

Kemtech Spherimatch - Match Lapping Machine

The Kemtech Spherimatch provides an automated method to match lap two valve halves, or similar components, together: For example - matching the concave barrel of a hydraulic piston pump to its convex swash plate. These faces need a perfectly matching radius to maintain performance and minimise leakage.

The SPHERiMATCH enables the removal of even deep scoring and final match lapping of bodies up to 400mm high and ranging from 75mm diameter up to 250mm.

One component part is held in a fully guarded, three jaw, chuck with reversible jaws and the opposing part located under the sweep arm with a specially designed location and anti-rotation fixture. Pressure is applied to the top part being lapped.



With a fully programmable process timer, this versatile machine can match lap curved or flat surfaces, of the same or different materials, with variable rotation speeds up to 70 rpm and a range of sweep arm strokes and speeds to suit the components being lapped.

Features & Benefits

- Match laps parts from 75 to 250mm diameter and up to 400mm high
- Fabricated steel body with adjustable levelling feet
- Integrally mounted high torque drive unit with 0.37kW (0.5HP) motor
- Sealed maintenance free reduction gearbox
- Electronic digital timer with variable time ranges
- 3 jaw chuck
- Lap plate speed variable up to 70 rpm
- Variable speed sweep action & sweep range
- Electrical: 230V-single phase-50Hz
- Product code: 359599

Kemet 300L Models

The Kemet 300L are fitted with a serrated cast iron or Kemet Composite Plate to suit the application. A single control ring is located in a ring style holder and runs between 3 rollers. This is adjustable for both height and position.

Recommended Accessories

Hand weight	345450
Serrated Cast Iron Conditioning Ring	345434

Technical Specifications	
Lapping Plate outside Diameter	300 mm
Lapping Plate Speed	0 - 130 rpm
Conditioning Ring inside Diameter	125 mm
Conditioning Ring Outside Diameter	140 mm
Standard Electrical Supply	Electrical 220V-1 Phase-50Hz
Main Drive Motor	High Torque Motor (1 HP) 0.75kW
Dimensions (mm)	420 x 730 x 350
Weight	37kg
Product code	345459



Kemet 300 LVAC Polishing Machine

The Kemet 300 LVAC special purpose polishing machine is a smaller alternative to the Kemtech 15 geological lapping machine for polishing geological mounted samples.

Technical Specifications

Lapping Plate outside Diameter	300 mm
Lapping Plate Speed	0 - 130 rpm
Conditioning Ring inside Diameter	125 mm
Conditioning Ring Outside Diameter	140 mm
Standard Electrical Supply	Electrical 220V-1 Phase-50Hz
Main Drive Motor	High Torque Motor (1 HP) 0.75kW
Dimensions (mm)	420 x 730 x 350
Weight	37kg
Product code	345467



The basic machine has a 300mm diameter plate. All drive elements are mounted on a heavy duty aluminium alloy casting, giving vibration free operation and silent running. Water inlet with control valve are standard features. The control panel has a process timer, variable speed control and forward / reverse control switch and it's own vacuum pump and connectors to suit Kemet vacuum jigs, which are available as an optional extra (see page 8).

Special Purpose & Bespoke Machines

As well as these standard flat, spherical and internal lapping machines, Kemet also offer a bespoke machine manufacturing service for applications where an off the shelf system is not available. This can be as basic as converting a hand finishing operation to an automated process, or as complex as a conveyor fed single piece lapping system capable of producing a finished part every 9 seconds. No application is too small for consideration.



Lapping Consumables

Kemet Composite Lapping Plates

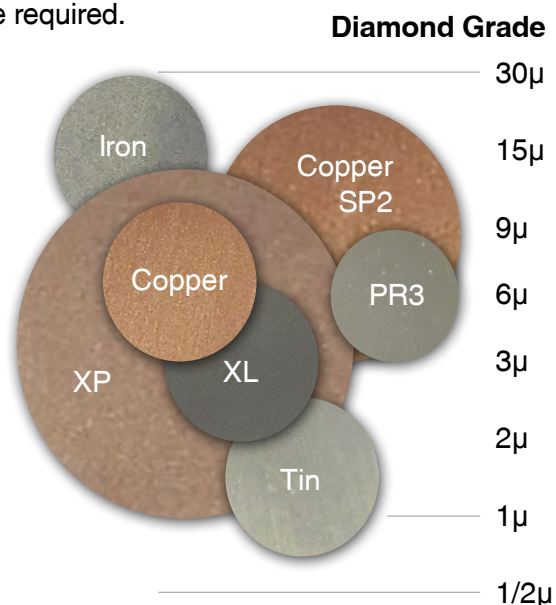
Manufactured from a homogeneous mixture of synthetic resins, metal particles and key bonding/hardening. The plates are designed for Kemet's advanced lapping technology, perfectly compatible with Kemet Liquid Diamond.

- Holds diamond particles firmly, ensuring both efficient stock removal and repetitive component surface finish.
- Ductile qualities cushion the diamond particles, preventing damage to the workpiece.
- Produced in varying hardness values so that even the softest material can be safely lapped with diamond particles without the fear of impregnation.
- Easy control for optimum flatness.
- Lapping/polishing plates available to fit all makes of lapping machines with plate diameters up to 3000mm.
- Dissipates heat and prevents laminar flow of lapped surfaces.
- Supplied with a cast iron backing plate for maximum stability.
- Recommended when high precision flatness and surface finish are required.

Composite Material	Plate Diameter (inches)			
	15	20	24	36
Kemet Copper	351102	351103	351106	351124
Kemet Copper SP2	351159	351964	351177	351965
Kemet Iron	351002	351081	351006	351010
Kemet PR3	351340	351374	351357	351343
Kemet Tin	351305	351320	351306	351315
Kemet XL	351356	351375	351376	351377
Kemet XP	351202	351266	351206	351227

Custom sizes and grooving are available.

Composite Material	Description
Kemet Iron	The most commonly used plate. For general purpose stock removal and lapping operations.
Kemet Copper	Used to lap softer materials where fine lapping and polishing are the primary requirements.
Kemet Copper SP2	Can be used for lapping or polishing hard and medium hardness materials.
Kemet PR3	Used to generate highly reflective surface finish. Ideal for pre-pad polishing for minimum roll off.
Kemet XL	Replacement for Lead/Tin plate, used for mirror polishing.
Kemet XP	Gives improved flat polished surfaces on many materials. Flat mirror-like surfaces can be produced on many hard materials.
Kemet Tin	One of the softest Kemet Plates used for mirror polishing with fine grades of Kemet Liquid Diamond.



Lapping Plate Grooving

Lapping plates can be supplied grooved to suit specific applications. A cross hatched pattern is common on Cast Iron Hand Lapping plates and Dual Face Machine plates and gives increased stock removal rates due to the additional cutting edges generated on each groove. A Spiral groove pattern is used primarily when polishing parts that need to have a good surface finish and flatness, allowing contamination to be carried away from the cutting surface and making it easier to keep the lapping plate contact surface flat. The edges of the groove maintain good stock removal even through the diamond particle size may be small.

Annular Grooved Plates

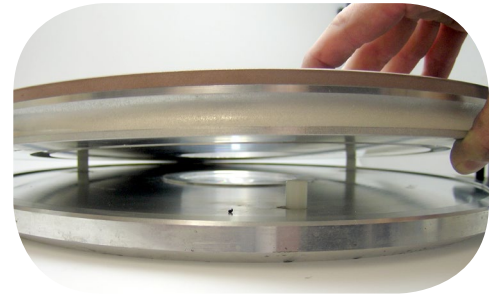
These plates are designed for precision shoulder lapping of a wide range of parts, such as fuel pump gear faces and pressure relief valve caps. These are bespoke manufactured and the groove width and depth of plates need to be specified when ordering.



Lift Off Disc System

Suitable for multistage processing when workshop space is a premium or budget constraints only allow a single machine. Kemet Lapping Plates are available as Lift-Off Discs in 15" and 20" diameter. Discs are supplied mounted on an aluminium backing plate, which locates onto an aluminium drive plate by means of three pegs. Lift Off Discs can be easily changed and are recommended for light duty work where general flatness and precision finish are required.

Description	15"	20"
Aluminium Drive Plate	361002	362255
Aluminium Lift Off Disc	361001	362290
Kemet Iron Lift Off Disc	351025	E09714
Kemet Copper Lift Off Disc	351121	E09715
Kemet XP Lift Off Disc	351226	E10063
Kemet Tin Lift Off Disc	351314	E10103



Kemet Composite Lapping Rods

For use with Kemet's diamond compounds, Kemet composite rods are manufactured from a homogeneous mix of synthetic resins, metal particles and other materials. Produced in a variety of hardness values, the softest materials can be safely lapped with Kemet Diamond compound. They are commonly used to improve the surface quality of parts previously lapped using Kemet Helilaps.

Type	Diameter Size (mm)		
	25x150	50x150	75x150
Kemet Iron	352101	352102	352103
Kemet Copper	352104	352105	352106
Kemet XP	352113	352108	352114
Kemet Tin	352107	352116	352163



Cast Iron Lapping Plates

Kemet offer a wide range of cast iron lapping plates to suit most lapping machines. (Other sizes available on request)

Cast Iron Lapping Plates (Pre-lapped)	Plate Diameter (inches)			
	15	20	24	36
Serrated	362400	362402	362404	362406
Solid	362401	362403	362405	362407

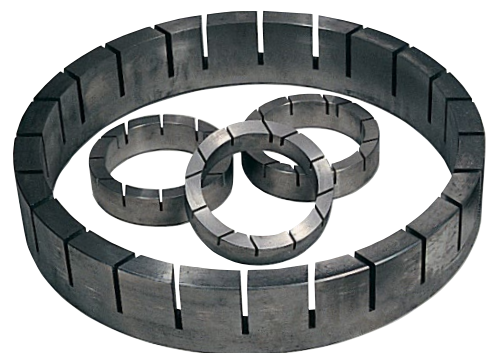


Conditioning Rings

Cast Iron Conditioning Rings available as solid or serrated. Replacements are available to fit most flat lapping machine models. Custom built diamond plated conditioning rings available in a variety of Grit sizes, including Grit 60 and Grit 120. Plastic faced and ceramic faced conditioning rings are also available and these are used for polishing rather than lapping operations.

Lapping Machine	Solid (ci)		Serrated (ci)	
	3 Ring	4 Ring	3 Ring	4 Ring
Kemet 15	360204	-	360203	-
Kemet 20	360818	-	361027	-
Kemet 24	360679	360680	360208	360274
Kemet 36	360186	360681	360278	360682
Kemet 40	*	*	360683	*
Kemet 48	360662	360235	360833	360642

* Available on request



Kemet offer a refacing service when the Kemet Composite material falls below 3mm thickness.

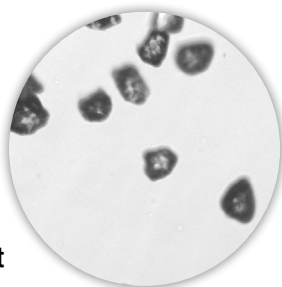
Diamond Products

Kemet offer a wide range of standard and special Diamond Products formulated and manufactured in our quality controlled laboratories. Each is a special blend of diamond powder with a specific grading and concentration in a chemical carrier to give the optimum:

- Stock removal and surface finish.
- Ease of cleaning.
- Temperature resistance.
- Lubricity to prevent drying out.

With changing technology, new Kemet Diamond Products are continually being developed to meet specific requirements. These products may well incorporate different types of diamond to suit the application such as synthetic or natural, monocrystalline or polycrystalline powder, suspended in a wide range of chemical carriers.

Our laboratories can also help to develop formulations specific to your application.



Micron	Grade
0.1	140,000*
0.25	25,000*
1	14,000*
3	8,000*
6	3,000*
8	1,800*
14	1,200*
25	600
45	300
60	230
90	170

*Estimated

• Diamond Grading

The exceptionally close grading standards developed by Kemet exceed many international standards and guarantee that Kemet Diamond Products are manufactured to the closest tolerances.

• Quality Control

Microscopic and computer analysis of the diamond powder ensures that it is exactly the correct grading and shape to maximise cutting performance.

• Consistency of Performance

Strictly manufactured to ISO 9001:2008 quality assurance standards - our guarantee that the quality will be consistent.

• User Friendly

Manufactured from the highest purity chemicals - safe to use and friendly to the environment.

We use only the best quality virgin diamond powder and the highest purity chemicals in Kemet Diamond Products.

Diamond Compound / Paste

For hand lapping applications Kemet offer a huge range of Diamond Compounds for rapid stock removal, superfine surface finish, lapping and pre-polishing. Micron sizes ranging from 1/10 to 90, soluble in either oil (Type L), water (Type W) or both (Type KD). High thermal stability of the chemical carrier ensures that Kemet Diamond Compound resists frictional heat, remains stable, and keeps its suspension properties under operating conditions. For our full range, please view our website or tool room catalogue.



Liquid Diamond



Our range of Kemet Liquid Diamond products are available as oil soluble, water soluble or as emulsions. The chemical composition of the carrier fluids is carefully controlled to ensure that they are compatible both with the Kemet Lapping Plate and the components being lapped.

- Precision graded diamond particles in a fluid.
- Optimum viscosity and chemical composition of each Liquid Diamond Product gives fast stock removal with the ability to produce superfine surface finishes.
- Suitable for dispensing with the Kemet Electronic Dispensing System thus eliminating wastage and reducing lapping costs.
- Specially formulated Liquid Diamond Products enable parts to be easily cleaned.

Ultrasonic Cleaners and Fluids on pages 25-26

TYPE K (Oil / water emulsion) Liquid Diamond



An excellent, low viscosity oil/water emulsion suitable for all general purpose lapping.

Micron	400g			2000g		
	Standard	Strong	Extra Strong	Standard	Strong	Extra Strong
A	1/10	211001	211021	-	211080	-
	1/4	211002	211022	-	211081	-
	1/2	211003	-	-	211083	-
	1	211004	211024	-	211084	211105
	2	211005	211025	-	-	-
	3	211006	211026	211046	211086	211106
	4.5	211007	211027	211047	211087	211107
B	6	211008	211028	211054	211088	211108
	8	211009	211029	-	211089	211109
	10	211010	211030	211050	211132	211110
	14	211011	211031	211051	211091	211111
	25	211012	211032	211052	211092	211112
C	45	211013	211033	211053	-	-

TYPE O (Oil based) Liquid Diamond



An excellent, general purpose, low viscosity oil based suspension suitable for heavy parts and high volumes.

Micron	400g			2000g		
	Standard	Strong	Extra Strong	Standard	Strong	Extra Strong
A	1/10	216001	-	-	216082	-
	1/4	216002	-	-	216083	-
	1/2	216003	-	-	216084	-
	1	216004	216024	-	216085	216104
	2	216005	216025	216045	216081	216105
	3	216006	216026	216046	216086	216106
	4.5	216007	216027	216047	216087	216108
B	6	216008	216028	216048	216088	216107
	8	216009	216029	216049	216089	216109
	10	216016	216030	216050	216095	216110
	14	216011	216031	216051	216092	216111
	25	216012	216032	216052	216090	216112
C	45	216013	216033	216053	216094	216113

TYPE WA (Water based) Liquid Diamond



An excellent, general purpose, low viscosity water based slurry for general purpose lapping where oils and emulsions can not be used.

Micron	400g			2000g		
	Standard	Strong	Extra Strong	Standard	Strong	Extra Strong
A	1/10	214001	-	214042	214071	-
	1/4	214002	-	214043	214072	-
	1/2	214003	-	214044	214073	-
	1	214004	214024	214045	214074	214106
	3	214006	214027	214047	214076	214108
	4.5	214007	-	214048	214077	-
	6	214008	214028	214049	214078	214080
B	8	214009	214029	214050	214081	214101
	10	214010	214030	214052	214082	214110
	14	214011	214031	214051	214083	214079
	25	214012	214032	214053	214084	214103
C	45	214013	214033	214054	214085	214111

A = Final Polishing B = Lapping & Pre-polishing C = Rapid Stock Removal

* ZERO Volatile Organic Compounds (VOC) - not classified as an atmospheric pollutant and offer health and safety benefits. VOCs are organic chemicals that have a high vapour pressure at ordinary room temperature, some of which can be dangerous to human health and/or cause harm to the environment.



Lubricating Fluids

- Assists Kemet Diamond Products to cut and polish more effectively by absorbing frictional heat and diluting the lapping residue.
- Lubricant performance remains stable even when under high pressure.
- Manufactured from high purity chemicals.

Type	Description	Soluble in	Colour	450ml Trigger spray	2.5 Litres	25 Litres
W	Recommended for use on all Kemet Polishing Cloths as it helps to extend their life.	Water	Clear	301201	301101	301151
OS	Recommended when polishing tooling, moulds and similar components.	Oil	Blue	301203	301103	301112
W2	Developed for use with Kemet Diamond Suspension, particularly when used with Kemet Lapping Plates. (GW2 is odourless)	Water	Clear	301202	301102	301205
GW2		Water	Light green	301514	301108	-
LS	Where components need to undergo a water based cleaning operation after lapping.	Oil/Water	Blue	301204	301104	-
K	Assists smooth running of the lapping operation and helps to ensure a cleaner process.	Oil	Clear	301178	301124	301125
R OS2	For use where water is not permitted.	Oil	Red	301513	301512	-
BLUE	Improves cutting and polishing performance on cloths or plates.	Water	Blue	301200	301156	-

Col-K

A Liquid polish used on Kemet Chem Cloth to produce the ultimate in high quality mirror polishes on polishing machines. A part abrasive, part chemical polishing action makes Col-K well suited to polishing difficult materials such as Stellite and Cobalt Chrome. Also available in non crystallising version called Kemet Col-K (NC).

Unit	Col-K	Col-K (NC)
1 Litre	600262	600261
5 Litres	600212	600199
20 Litres	600204	600202

Kemox

Kemox is a conventional lapping abrasive that has been suspension treated so that the abrasive particles do not settle out into a hard sediment in the bottom of the abrasive tank. Kemox is available in water soluble (Kemox-W) or oil soluble (Kemox-O) formulations in 5 or 20 Litres. The abrasive concentration is always correct and eliminates the health and safety risk of adding powder to oil.

Product	Size	Code	Description
Kemox O-960	5 Litre	300101	Oil Based. Finest surface finish on soft components
Kemox O-950	5 Litre	300102	Oil Based. Finer surface finish on soft components
Kemox O-900	5 Litre	300103	
Kemox O-800	5 Litre	300104	Oil Based. General aluminium oxide lapping where a scratch free matt lap is required
Kemox O-800S	5 Litre	300112	
Kemox O-800 (Fine)	5 Litre	300107	
Kemox O-800 FHC	5 Litre	300109	
Kemox O-400	5 Litre	300105	Oil Based. Plate conditioning and matt lapping where good stock removal and a matt lap is required
Kemox O-400S	5 Litre	300111	
Kemox W-950	5 Litre	300152	Water based where oil can't be used. Finer surface finish on soft components
Kemox W-800	5 Litre	300143	Water based
Kemox W-400	5 Litre	300141	



Universal Lapping Oil

Lubrication is necessary for a smooth running condition between the lap plate and conditioning rings and to help evenly disperse the abrasive product on the lap plate. Lapping vehicle used with any abrasive powder should be properly matched in order to give the best cutting action possible, maintain even dispersion of abrasive throughout the lapping surface, and produce uniform finishes. The proper lapping vehicle in conjunction with the right abrasive will reduce lapping time and reduce the amount of slurry needed to complete the job. A typical mix would be 1kg of abrasive to 5 Litres of lapping oil.

Size	Code
5 litres	361516
20 litres	361517
205 litres	361498



Sabre Aluminium Oxide Paste

Specially formulated containing Aluminium Oxide Abrasive and is available in 20g syringes. It is suitable for a wide range of lapping/polishing operations, and it is particularly effective when used for smoothing soft metals such as brass, aluminium and copper. It is also effective for smoothing small areas of glass prior to polishing. Sabre Pastes are also available based on both silicon carbide and boron carbide abrasives.

Micron	Code
0.1	300206
0.5	300205
3	300204
7	300203
9	300202
23	300201

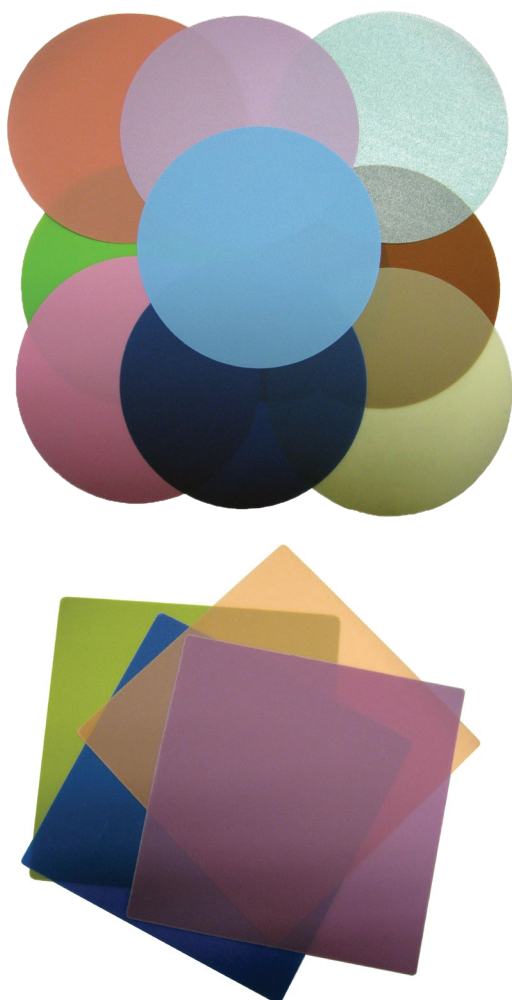


Lapping Pastes & Powders

Kemet manufacture a wide range of abrasive lapping pastes. Our range of Silicon Carbide and Aluminium Oxide pastes have many applications but are particularly suited to the lapping of mechanical seals and valve seats. The pastes are **water soluble** and safe to use.

Product	Type	Micron	FEPA Grade	Pastes	Powders	
				1kg	5 kg	25kg
Green Silicon Carbide	Fine	3	1200	361547	361537	361616
		5	1000	361552	361535	361536
		7	800	362616	-	-
	Medium	9	600	361514	361563	361631
		17	400	361551	361512	361579
		23	360	361548	-	-
	Coarse	30	320	361558	-	-
		37	280	361538	361532	361629
		75	180	-	361541	361653
		9	600	-	361562	361651
Black Silicon Carbide	Medium	22.8	360	-	361648	361649
		37	280	-	361646	361647
		53	230	-	361644	361645
	Coarse	75	180	361549	-	-
		109	120	361689	-	-
		23	360	361542	361554	361561
White Aluminium Oxide	Fine	3	1200	361544	-	-
		5	1000	361624	-	-
	Medium	7	800	361545	361676	361615
		9	600	361543	361555	361614
		13	500	361546	-	-
	Coarse	23	360	361542	361554	361561
		23	360	361542	361554	361561
		23	360	361542	361554	361561





Diamond Lapping Film

Kemet precision coated diamond abrasive lapping film products are specifically engineered to meet all your ultra-fine, consistent polishing and final finishing requirements.

- Wide range of engineered, tightly-graded micron-sized particles. Ensures consistent, long-lasting polishing. Generates scratch free surfaces; achieving Ra values under 1 micro-inch on hard materials, including HVOF depositions. Improves coolant access at point of contact
- Proprietary resin system improves adhesion to substrate
- Uniform 3 mil polyester film backing, ensures film flatness and improved part geometry
- Compatible with most machinery attachments and all coolants, allowing quick film replacement
- Long life and offers high yields, reduced rework, and uses fewer steps for lowest total abrasive costs

Micron	230 x 280 mm
0.5	362901
1	362549
3	362550
6	362902
9	362903
15	362040
30	362904

*Kemet Diamond Lapping Film,
Plain Backed*

Microns	Roll Width	Roll Length	Disc Diameter	Sheet Size
1, 3, 9	>= 12"	50' - 150'	>= 12"	>= 12" x 12"
9, 15, 30, 45, 60, 76, 100	>= 12"	50' - 150'	>= 12"	>= 12" x 12"
1, 3, 6	>= 12"	50' - 150'	>= 12"	>= 12" x 12"

Standard roll <= widths 50, 100 and 200 mm. Other <= widths are available on request.

Aluminium Oxide Lapping Film

Tightly graded aluminium oxide coated onto a 0.3mm thickness polyester film backing. Available with or without PSA (pressure sensitive adhesive).

- Excellent surface finish
- Reduces overall process time
- Produces high yields
- Non-slurry processing

Micron	Colour	Code
0.3	White	361706
1	Green	361707
3	Pink	361708
5	Brown	362420
6	Blue	361709
12	Yellow	361710
30	Green	361711
40	Blue	361712
60	White	361713

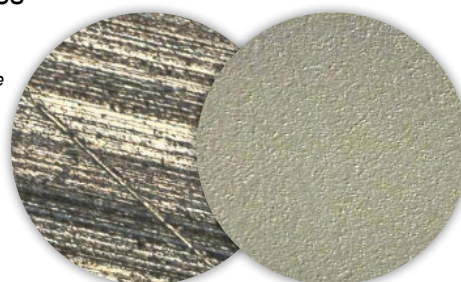
216 x 280 mm sheet plain backed Aluminium Oxide Lapping Film - Supplied in packs of 50

NanoKem Diamond Lapping Film

NanoKem precision coated diamond abrasive lapping film incorporates a proprietary new particle, designed to improve the quality of polished surfaces by eliminating scratch-generating agglomerations. By polishing at nominal particle sizes it shortens polishing processes and enables increased cutting from each diamond particle. One-step NanoKem film achieves the end finish specification of as many as two or three conventional diamond film products.

- Performance quality: the most achievable fine finish using coated abrasives
- Cost savings: elimination of production process steps
- Safety/environmental improvements: elimination of dirty, messy slurries

Carbide surface after polishing with P220 grit silicon carbide waterproof paper











Scratch-free finishing in one step - the previous carbide surface after polishing with 1 micron NanoKem film

Microns	Roll Width	Roll Length	Disc Diameter	Sheet Size
1, 3, 9	<=12"	50'-150'	<=12"	<=12"x12"

*All are 3 mil (75 mic.) polyester film. Stock Sheet sizes: 9" x 11" : 9" x 13"
Stock Roll sizes: 2" x 50' : 3" x 50' : 4" x 50' : 8" x 50'*

Kemet Polishing Pads

Flat polished surfaces on many softer materials can only be produced with polishing pads. Available to suit most grinder/polisher and flat lapping machines, Kemet offer the widest range of self-adhesive and metallic backed polishing pads. These are generally split into three types: Chemo-textile, Nap and Synthetic Silk

Name	Type	Description	Use with Recommended Diamond Micron size	Ø (mm) Supplied in pk of 10				Colour
				300	380	610	914	
PSU-M	Chemo-textile These are manufactured to the highest standards with accurately controlled uniform thickness. Self-adhesive. Non-woven pads manufactured specially for polishing processes.	These medium and hard chemo-textile cloths are for smoothing and polishing operations.	15 micron and finer	341010	341011	-	341035	
PSU-MM (magnetic)				341813	341814	341837	341838	
NSH-B	Nap Cloths For final polishing stages of preparation, Kemet Nap Type Cloths are available with a range of softness and nap length. They give a more gentle polish, and are ideal for softer specimens and components.	A short nap cloth with woven backing used for metallographic and some optical polishing operations.	3 micron and finer	341203	341243	-	E05504	
NSH-BM (magnetic)				341262	341264	341265	341266	
NLH	Nap Cloths All cloths are self-adhesive unless marked 'plain'. 	A longer, stiffer nap cloth.	6 micron and finer	341206	341248	-	-	
NLH-M (magnetic)				341267				
CHEM-H		For use with a chemical mechanical polishing process with colloidal silica suspension.		341784	341865	341786	341866	
Chem-HM (magnetic)				341853	341854	341856	341855	
MRE		Synthetic flock on a flexible waterproof carrier. A more heavy duty cloth	6 micron and finer	341714	341715	-	341942	
MRE-M (magnetic)				341817	341818	341819	341828	
ASFL	Synthetic Silk Durable woven structure, developed for finishing metal specimens and components.	Synthetic silk pad with durable woven structure for mirror finishing of most metals.	6 micron and finer	341111	341112	341113	341140	
ASFL-M (magnetic)				341177	341178	341179	-	
MSFL		Will polish metal flat, and to a mirror finish.	3 micron and finer	341755				

Other sizes available on request.

Type	Description	Square (mm)
		127 x 127
Sphercloth A	For general purpose, single use spherical polishing pads.	341998
Sphercloth B		341966
NLH	For high gloss spherical polishing	341276

Supplied in packs of 10

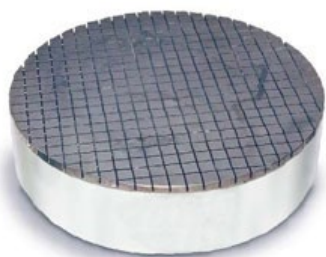
Magnetic Polishing Pad Systems

The Kemet magnetic disc system is suitable for Kemet's range of magnetic polishing pads (marked 'magnetic' above), diamond grinding and fine grinding discs, and any magnetic consumable from other suppliers.

- Easy to change and cloths last longer
- No adhesive breakdown problems
- Faster and cleaner cloth changes
- No metal disc involved so safe to use

Magnetic Disc Size	Code
Ø 200 mm	345770
Ø 250 mm	345771
Ø 300 mm	345772





Cast Iron Hand Lapping Plates

The Cast Iron plates are made from high quality, low porosity grey cast iron (Grade 300 to BS1452). These are used with an abrasive grit, applied in paste form to give a uniform dull matt finish on a wide variety of metallic and non-metallic materials.

Description	Disc Diameter				Square (WxLxH)
	6"	8"	12"	18"	12" x 12" x 2"
Hand Lap Plate c/hatch grooves	361021	360835	360198	360707	362473
Hand Lap Plate solid	361738	361739	360264	360762	-



Soft Metal Hand Lapping Plates

The Soft Metal plates are made of Tin.

Description	6"	12"
Hand Lap Plate SOFT METAL	361049	361046

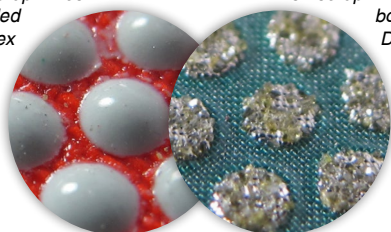


Diaflex - Diamond Grinding

Kemet Diaflex is a self adhesive, flexible diamond material which combines the long life and aggressive cutting action of diamond with the flexibility of cloth. It is supplied in either discs or squares, and a wide range of grit sizes. The diamond is either nickel bonded (N) or resin bonded (R). It is suitable as a grinding step in either metallographic sample preparation or flat lapping. Diaflex can be supplied as plain backed.

Close-up of resin bonded Diaflex

Close-up of nickel bonded Diaflex

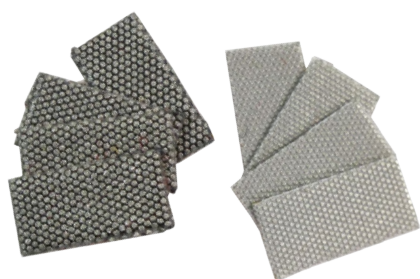


Grade	Grit / Micron Size	Disc (mm)					Square (mm)		
		150	200	230	250	300	100 x 100	150 x 150	300 x 300
Green (N)	60 / 250	342074	342025	342075	342076	342068	342011	342013	342048
Black (N)	120 / 125	342001	342002	342077	342026	342027	342014	342070	342049
Red (N)	200 / 74	342004	342005	342067	342028	342029	342016	342036	342050
Yellow (N)	400 / 40-50	342006	342007	342071	342030	342031	342018	342066	342051
White (N)	800 / 20-30	342032	342008	342072	342033	342034	342020	342037	342052
Yellow / White (R)	800 / 20-30	342078	342035	342079	342080	342047	342038	342044	342053
Blue (R)	1800 / 6-12	342042	342009	342073	342081	342084	342043	342021	342054
Orange (R)	12000 / 1-3	342069	342010	342082	342083	342085	342022	342023	342055

Dressing Pads

Kemet Diamond Dressing Pads come in two different varieties - coarse and fine. They are self adhesive and are fixed to the bottom of cast iron conditioning ring for rapid plate flatness correction on Kemet Lapping Machines.

Grade	Unit	Code
Fine	Pack of 8	361524
Coarse	Pack of 8	361525
Fine	Pack of 12	361526
Coarse	Pack of 12	361527



Workholding and Holders

Workholding is one of the most important factors when carrying out a lapping operation. The flatness of a part can be adversely affected by incorrect workholding.

Non skid pads for all machines can be supplied, together with blank workholding discs. This is placed directly on top of the parts which have been positioned inside the conditioning ring.

Lapping Machine	Diameter	Thickness	Code
Kemet 15	138mm	3mm	360206
Kemet 15	138mm	6mm	360678
Kemet 20	189mm	3mm	362460
Kemet 24 (3 ring)	246mm	3mm	360269
Kemet 24 (3 ring)	246mm	6mm	360232
Kemet 36 (3 ring)	366mm	3mm	360280
Kemet 36 (3 ring)	366mm	6mm	360285
Kemet 48 (3 ring)	503mm	6mm	360248
Kemet 56 (3 ring)	576mm	6mm	362498



Kemet Facing kit

The Kemet facing kit consists of a non-skid rubber pad. This pad can be fixed to the bottom surface of the hand weight. The hand weight with the pad is then placed directly on top of the parts which have been positioned inside the conditioning ring. Lapping can occur and the parts will not skid out of position.

Lapping Machine	Code
Kemet 15	361503
Kemet 24	361504
Kemet 36	361509



Non-slip Film (material)

The Non-slip material has a protective film on both sides, which will keep the material clean until ready to use.

Dimensions: 406 mm x 9 m

Product	Code
Dycem	361505



Foam Tape

Double sided self-adhesive foam tape.

Dimensions: 3 mm thick, 50 mm wide and 25 m long.

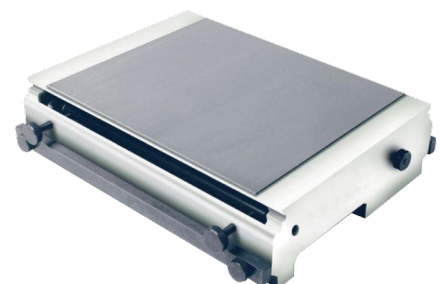
Product	Code
Foam Tape	361506



Polishing Stand with Paper

Recommended for polishing workpieces to produce reflection needed for viewing under monochromatic light sources. The heavy-duty polishing table is provided with a tensioning mechanism for smooth pulling of the polishing paper. Table dimensions 350 x 280 mm.

Hand Polishing Paper (Grit 2000)	Code
10 m x 305 mm	362183
50 m x 305 mm	362162
Product	Code
Polishing Stand	361560



Lapping Accessories

Electronic Dispenser System



The Kemet Electronic Dispenser distributes Liquid Diamond and Lubricating Fluid by means of touch sensitive settings. The digital display shows dispensing intervals, durations and air pressure at a glance. The dispenser achieves great accuracy, eliminating wastage and simplifying cost control.

The Kemet Liquid Diamond Stirrer Unit maintains a consistent distribution of diamond particles within the slurry by using a small non-contaminant plastic coated paddle magnet, which ensures even diamond suspension. The Kemet Dual Dispensing Bar can be positioned to dispense Liquid Diamond and Lubricating Fluid accurately on to the plate without spray bounce.

- Supplied as standard with Kemet Flat Lapping and Polishing Machines and Plates
- Easily fitted to existing conventional Flat Lapping Machines to improve productivity
- Fully controlled metering of Liquid Diamond and Lubricating Fluid using independent pressure and time settings
- Electrical system complies with EN 60 204.
- Can also be used as a standalone unit for bespoke applications that require controlled dispensing
- Dispenser Service Kit available to keep the unit in optimal use - Product Code: 362530



Electronic Dispenser

Height	Width	Depth (exc. air filter)	Nett Weight	Code
150 mm	230 mm	150 mm	3.74kg	360499

Dispenses Kemet Liquid Diamond and Lubricating Fluid automatically at pre-set intervals in conjunction with a lapping and polishing machine cycle timer.

Air requirements: 1 Bar min - 5 Bar max. **Air pressure:** Dual circuit. **Air pressure display:** Bar or psi
Adjustable duration of spray: 1-9 seconds. **Adjustable intervals of spray:** 1-999 seconds
Spray memory: Standard. **Manual override:** Standard
Electrical supply: 110V or 220V - 240V / 50Hz or 60Hz (self adjusting for supply voltage & frequency)



Liquid Diamond Stirrer Unit

Height	Width	Depth	Power	Code
120 mm	90 mm	215 mm	50Hz or 60Hz	230V 360534 110V 360536

Quiet electric unit has fully variable speed control and is provided with a magnetic stirrer paddle also holds the bottle for the lubricating fluid.

Single Spray Head

Length	Code
250 mm	360514
380 mm	360512



Supplied with bottle, cap and plastic tubing.



Dual Dispensing Bar & Bottles

Type	Length	Reach	Adjustable Height	Section of head	Bottle capacity	Code
Standard	340 mm	260 mm	100 mm	20 x 20 mm	400ml	360511
Long	495 mm	415 mm	100 mm	20 x 20 mm	400ml	360510

Supplied complete with two bottles and plastic tubing. Fully adjustable head for vertical and radial positioning.

aKu-Disp Peristaltic Dispenser

The aKu-Disp is a peristaltic dispenser designed to work with Kemet Lapping Machines. It incorporates a stirrer and has a programmable timer. A separate purge button will return any solution in the pipework and sprayhead to the receptacle.

The aKu-Disp can be programmed to pump slurries for specific durations and frequencies enabling metered dispensing. This allows a user to accurately control consumable usage.

When integrated onto a Kemet Lapping Machine, the aKu-Disp will start and stop with the host machine timer. This means an operator can leave a machine to concentrate on other tasks, safe in the knowledge that the aKu-Disp will switch off unattended

The aKu-Disp is easily serviceable with all rotating parts fitted to the exterior.

Product	Code
aKu-Disp	345751



Lapping Machine Maintenance Kit

This Kit is used for the general maintenance of the Kemet 36 (and larger) Diamond Lapping machines.

The Kit comprises of:

- 1 Grease gun (compatible with the grease cartridge)
- 1 Oil gun with end fitting compatible with the male fitting found on the Lapping machine.
- 1 Litre of gearbox oil
- 1 EP2 grease cartridge

Product	Code
Lapping Machine Maintenance Kit	362220



Flatness Gauges

The Kemet 9" Flatness Gauge is used to monitor a lapping plate's flatness and to give an indication of the flatness the plate will produce on a given part size. The gauge comes with a calibrated single-sided master setting block and is supplied complete with instructions in a fitted case.

- Suitable for lapping plates 15" to 36" diameter
- Span of Gauge: 9.29" (236mm)
- 1 Micron Accuracy
- Recalibration service available

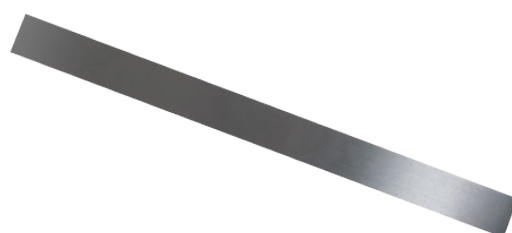
Product	Code
9" Flatness Gauge	361304



Straight Edges to Measure Plate Flatness

Kemet offer wide range of steel straight edges to measure plate flatness. Manufactured to DIN 874.

Description	Lapping Machine Model				
	15	20	24	36	48
Length	500mm	500mm	750mm	1000mm	1500mm
Cross section	40mm x 8mm	40mm x 8mm	50mm x 10mm	50mm x 10mm	60mm x 12mm
Accuracy	Grade 1	Grade 1	Grade 1	Grade 1	Grade 1
Code	361501	360864	361502	360239	360861





Monochromatic Light Source

Produces clear flatness readings when used with Kemet Optical Flats. The compact designed light is easily transportable and uses a sodium long-life light source. Supplied with a flatness reading interpretation chart.

- Detachable power lead with on / off switch at the side
- Supplied with compliance certificate and instructions
- CE marked

Description	Code
Monochromatic Light - 230v	361201
Monochromatic Light - 110v	361211
18 W Sodium lamp	361204

Optical Flats

Produced from Quartz, Kemet Optical Flats are available in single and double sided, 1/4 and 1/10* light band accuracy, in sizes from 25mm up to 400mm diameter**. They are supplied with Certificate of Conformity with full traceability to international standards. Special optical flats are available on request. Kemet offers an optical flat reconditioning and calibration service.

* Higher accuracy available on request.

** Larger sizes made to order with configurations such as squares, rectangles and donut shapes and custom thickness are available.

Size	Single Sided		Double Sided	
	1/4	1/10	1/4	1/10
25mm	361220	361221	361237	361238
50mm	361222	361223	361215	361239
75mm	361224	361225	361705	361240
100mm	361226	361227	361210	361241
125mm	361228	361229	361242	361214
150mm	361123	361231	361216	361243
200mm	361232	361233	361219	361244
250mm	361234	361235	361217	361245
300mm	361218	361236	361246	361247



Optical Flat Stands

Large optical flats (250mm diameter and above) are heavy. If they are placed directly onto a thin component such as mechanical seals, they can cause distortion of the component and incorrect light band readings. Kemet Optical Flat Stands allow the part to be placed onto the optical flat surface meaning there is no distortion. They also allow a single large optical flat to be used on a wide range of part sizes.

Optical Flat Cleaning and Care Kit

This Kit is used for cleaning Kemet Optical Flats. Taking special care of these will ensure accuracy and long service.

The Kit comprises of:

- 1 Soft Optical Lens Brush
 - 1 Kemet Lens Klean Fluid 250ml
 - 1 pack of Kemet Sphericloths (Containing 25)
 - 1 pack of Kemet Moist Lens Wipes (Containing 20)
 - 1 pack of Kemet Dry Lens Wipes (Containing 20)
- Full Instructions included.

Product	Code
Optical Flat Cleaning and Care Kit	362555



Kemet Portable Hand 3 Lap Kit

Suited for flat lapping and polishing by hand. It contains three lapping plates, each with its own grade of Kemet Diamond Compound. This makes it possible to process many components in three stages, from lapping through to polishing. Each lapping plate is backed with anti-slip matting and aluminium backing plate.

The kit consists of:

- Kemet Iron Lap Plate (for lapping) 150mm Ø
- Kemet XP Lap Plate (for smoothing), 150mm Ø
- Kemet Tin Lap Plate (for polishing), 150mm Ø
- 1 x 10g Kemet Diamond Compound Applikation Stick - 25 Micron
- 1 x 10g Kemet Diamond Compound Applikation Stick - 8 Micron
- 1 x 10g Kemet Diamond Compound Applikation Stick - 3 Micron
- 1 x Kemet OS Lubricating Fluid
- 1 x Aluminium case with Operating Instructions
- Product Code: 352206



Kemet Hand Lap Kits

Components lapped and/or polished by hand in minutes rather than hours. Ideal for components manufactured from ceramics, tungsten carbide, ni-resist etc. Kemet portable hand lapping kits are also ideally suitable for low volume production, when optimum surface finish is required, and where it is not economical to purchase a lapping or polishing machine.

Type	Plate (348mm dia)	Contents	Applikation Stick	Code
Type L Kit (Lapping)	Kemet Iron	1 x 10g Kemet Diamond Compound Applikation Stick.	25 Micron	352216
Type P Kit (Polishing)	Kemet XP	1 x Kemet OS Lubricating Fluid. 1 x Aluminium case with Operating Instructions.	3 micron	352208
Type SP Kit (Super Polishing)	Kemet XL		3 micron	352370



Pressure Relief Valve Lapping Kit

Incorrect lapping and or the use of improper equipment is a major contributor to seat leakage, which in turn leads to high emission rates and costs in loss of process. Kemet have produced a lapping kit that can be used on Tyco, Crosby, and Anderson Greenwood pressure relief valves.

The kit consists of:

- 15 Lapping / Polishing blocks, double sided (D through T2 orifice sizes).
- Bramet Silicon Carbide self adhesive papers. Grades 60, 120, 180, 320 Grit.
- 1 x Applikator of 3 Micron Kemet Diamond Compound.
- 1 x Applikator of 14 Micron Kemet Diamond Compound.
- Housed in strong plastic case (weight approx. 11.5kg)
- Product code: 352900



Ultrasonic Cleaning & Fluids

Although they are useful processes, lapping and polishing will always leave contaminants (abrasives, liquids, particles of the component material) on the parts when the process has finished.

Experience tells us that aqueous ultrasonic cleaning is the best solution for removing contamination from lapped and polished parts because the ultrasonic action is “searching” enough for complex parts, whilst at the same time gentle enough to not damage the flat lapped/polished surface. Even mirror polished surfaces can be cleaned in this way without degrading the polished finish.

Kemet have a full range of the most advanced ultrasonic cleaning equipment with new technology that assures maximum cleaning results whatever the condition within the tank. Ideal for multiple part cleaning, or validated part cleaning along with spray cleaning solutions for single part inspection.



For a full list of ultrasonic cleaners & cleaning fluids visit www.kemet-cleaning.co.uk

Kemet also have a programme of over 400 aqueous cleaning detergents (see page 26). No solvents are used, making the process kinder to the environment and to personnel. Rinsing, dewatering and hot air drying units can be supplied to complete and complement the cleaning process.

For high volume production we can supply multi stage washing rinsing and drying systems, with or without handling systems, and fully enclosed, if required.



Dasty Industrial Degreaser

For hand cleaning, this product is extremely effective for thoroughly degreasing all mechanical parts as well as large surfaces and perfect for cleaning off lapping residue. Thanks to its ultra-concentrated formula, Dasty easily removes grease, mineral oil, scale, etc. and is biodegradable, safe for shipping and contains no ozone depleting chemicals.

- **Dasty can be used in diluted form in ultrasonic cleaning machines - contact Kemet for more information.**

Size	Code
1 Litre	362936
Box of 12	362962

Kemet offer the finest in biodegradable cleaning fluids. These are specialist formulated concentrated detergents available in neutral, alkaline and acid types. Kemet are a distributor of NGL Cleaning Technology with more than 400 high performance formulations providing a solution to most cleaning challenges.



Type	Package Size	Product Code	Alkaline or Acid	PH approx	Dilution % Suggested	Temp °C Suggested	Suggested Use	Comments
Helit Plus	5-litre	362963	Alkaline	7.8	3-5%	40-70° C	Universal, neutral for Jewellery, Watch parts, Luxury items.	Non tarnishing will brighten, removes oils buffing compounds.
	25-litre	362964						
Galvex SU 737 (Kemet S8)	5-litre	362988	Alkaline	8	3-5%	50-75° C	Universal, neutral for all metals, Watch parts, etc.	Removes polishing compounds, good in hard / soft water
	25-litre	362989						
Galvex SU 747	5 -litre	362938	Alkaline	10	1-3%	50-80° C	Slightly stronger version of 737. IE: Watch cases, straps etc. S.Steel & Gold	Removes polishing compounds, good in hard / soft water
	25-litre	362939						
Galvex 17:30N	25-litre	362942	Alkaline	10	3-5%	50-80° C	Suitable for most metals but test first. Adds corrosion protection to steels	Removes oil & polishing compounds and general contamination
Galvex 18:01	25-litre	362944	Alkaline	9.5	3-5%	50-75° C	General purpose on all Metals. Also on Plastic machine cases	Removes polishing compounds and general contamination. Free Rinsing.
Galvex 17:30	25-litre	362940	Alkaline	10	1-2%	50-80° C	General purpose on all Metals. Cleaning prior to plating /coating	Removes oil & polishing compounds and general contamination
	200-litre	362941						
Rodacleen Supra	25-litre	363010	Alkaline	12.5	3-5%	60-70° C	Surface preparation on: Ceramics, titanium, steel HSS & hard metal prior to P.V.D.	Removes grinding & lapping paste. Might need Rodastel 30 to neutralise and assist rinsing.
Rodaweg	25-litre	363007	Alkaline	12.7	2-4%	30-75° C	Metal surfaces prior to Vacuum Coating. Can be used at 30° C	Removes oil & polishing compounds from steel & hard surfaces
Decoclean 440	25-litre	362945	Alkaline	13	5-15%	50-80° C	Heavy contamination on Ferrous metals only. Ultrasonic or Spray	Do not use on Non-ferrous metals. Rinse well.
Rodastel 30	25-litre	362947	Acidic	2	3-5%	Ambient to 60° C	Deoxidation, neutralise prior to Vacuum Metallisation.	Low acidic not classed as hazardous. Will shine copper alloys
Solvit 3	25-litre	362946	Acidic	2	3-10% Ultrasonic 10-30% Dip	Ambient to 45° C	Oxide, oils, carbon and polishing compounds from all metals.	Strong acidic action. Rinse well or, neutralise after use.

Hand Cleaning Solutions

C70 Solvent Cleaning Fluid

A versatile and highly efficient cleaning and degreasing fluid with a fast evaporation rate for removing grease, oil and residues from all metals and ceramics. Supplied in a pressurised container, complete with detachable extended spray tube for reaching into the most difficult areas, C70 contains NO ozone depleting substances.

Size	Container	Code
500ml	Aerosol	302114
500ml	Aerosols (Pk 12)	302115



CO - 42 Cleaning Fluid

Designed for cold use and applied by spray, brush, cloth or full immersion, CO42 is a highly efficient degreasing fluid similar in performance to 1.1.1 Trichloroethane, but without the ozone depleting properties.

Size	Container	Code
450ml	Trigger Spray	302103
5 Litres	Metal	302102
25 Litres	Metal	302101
200 Litres	Metal	302105



- C70 and CO-42 are **NOT** approved for use at elevated temperatures or in ultrasonic cleaning machines.

Kemet Technical Centre



Lapping and Polishing Services

If your components require optimum flatness to perform to specification, if they are difficult to lap, or you have a particularly tight deadline to meet, Kemet's Sub Contract Service is the answer. We're renowned for our service, reliability and quality, and we specialise in fast turnaround times.

Our machines are equipped with both standard and special lapping plates to enable us to process most types of components. We are able to lap and/or polish components up to 530mm diameter (approx 21").

All work is returned with a Certificate of Conformity covering the generated surface finish and flatness, relative to the customer's drawing or specification.

Process Development

We regularly assist customers by developing new products and processes, utilising the very latest in precision flat lapping technology. Customers' samples are evaluated, free-of-charge. Comprehensive reports are issued covering all aspects of the process, including details of abrasive, lapping plate, workholding, inspection, cleaning and the likely consumable costs involved. We are able to process the following materials:

Acrylic	Carbon	Ferrite	Nimonic Steel	Stainless steel
Alloys	Carbon Fibre	Fibre Optic	Nickel	Steel
Alumina	Cast iron	Film Guide	Piston Rings	Steel (Hard)
Aluminium	Ceramic	Gallium Arsenide	Plastic	Titanium
Aluminium Nitride	Chrome Plate	Germanium	Polyetherimide	Tool Steel
Anodised Aluminium	Cobalt Chrome	Glass	Quartz	Toughened Steel
Beryllium Copper	Compact Disc	Gold	Sapphire	Tungsten carbide
Bone	Concrete Cement	Graphite	Silicon	Tungsten Copper
Boron Carbide	Copper	Inconel (Cobalt/Nickel)	Silicon Aluminium Alloy	Vulcanised Fibre
Brass	Diamond Tools	Keronite (ceramic)	Silicon Carbide	Zinc Selenide
Bronze	Epoxy Resin	Molybdenum	Sintered Materials	Zirconate (Lead) Titanate

If a material does not appear in the list, please contact Kemet on **+44 (0)1622 755287**. All processed samples are returned with detailed technical process reports including detailed surface finishing measurements, free of charge.

Free Lapping Trials

Before

After

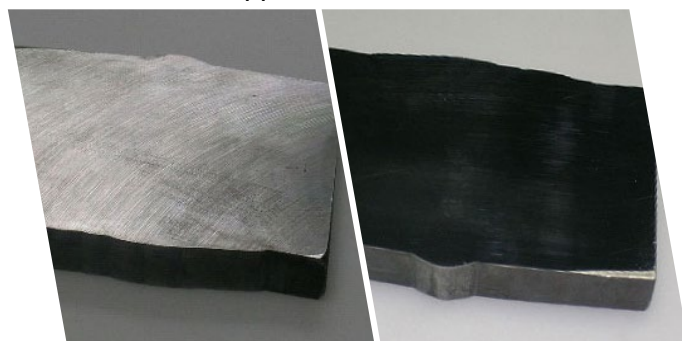
Medical Device Lapped & Polished



Before

After

Steel Lapped & Polished



Kemet After Sales Service and Support

Our expertise is available to you through our in-house technical specialists, a team of 5 Technical Representatives in the UK, and an extensive network of overseas Subsidiary Companies and Distributors.

Kemet provide continuous technical support for both prospective and current customers to ensure that any problems are correctly and quickly resolved.



Training

Tailor-made training courses are delivered regularly in our Technical Centre or at a customers' premises. On completion of a course, participants are awarded a certificate. Typical subjects are:

- Theory of lapping and polishing
- Product cleaning and inspection
- Workholding methods
- Setting up and operating machines
- Types of abrasive
- Surface finish measurement
- Flatness control and measurement
- Lapping plate types

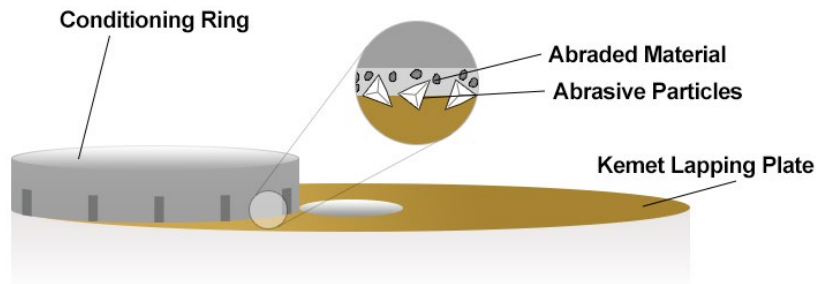
Flat Lapping Q&A

What is Lapping?

Lapping is a surface finishing process that improves surfaces that have previously been ground or fine turned. Lapping can produce many different types of finish, from a dull grey matt lap to a mirror polish. Depending on the material being lapped, and the method of lapping.

Why do we need to Lap?

- To produce a fine surface finish
- To produce sealing surfaces
- To produce sharp cutting edges
- To produce flat stress free surfaces
- To produce a datum face
- To improve the wear resistant properties of surfaces



What is Polishing?

Polishing is often carried out after a lapping operation, to produce the ultimate in surface finish. Some of the common reasons for polishing are:

- To produce mirror surfaces
- To improve appearances
- To obtain the optimum sealing surfaces
- To optically measure flatness
- To improve electrical contact
- To improve the optical qualities of materials

What is Diamond Lapping?

Diamond lapping is a material removal method using fixed diamond abrasive particles which produce chips off the component material. The process of making chips with a sharp abrasive grain produces the lowest amount of deformation in the component while giving the highest removal rate.

Diamond abrasive is pushed into the lapping plate surface, by a chamfer on the leading edge of the conditioning rings.

What is Conventional Lapping?

In conventional lapping, the abrasive (aluminium oxide or silicon carbide) is applied in a carrying vehicle (Lapping Oil) onto a hard surface such as cast iron. The particles cannot be pressed into the surface and be secured there, so they roll and move freely in all directions. They hammer small particles out of the sample surface, introducing deep deformations. This takes place because the free moving abrasive particle is not able to produce a real "chip" of the component surface. Conventional lapping produces only grey matt finishes.

What is Diamond Polishing?

Diamond Polishing uses the same mechanism as Diamond lapping. However by using successively small grain sizes of 8, 6 and 3 micron diamond, with softer Kemet plates and polishing pads with higher resilience, polishing can remove the deformations and scratches from lapping.

Kemet



Kemet International Ltd. Subsidiary Companies

Netherlands
Kemet Europe B.V

Singapore
Kemet Far East Pte Ltd

Japan / Korea
Kemet Japan / Kemet Korea

China
Kemet China Ltd

Malaysia
Kemet Precision (M) SDN BHD

Australia
Kemet Australia Pty Ltd

Kemet Products are available through a worldwide Network of Authorised Distributors in

Europe
Asia

Africa
Americas

Middle East
Australasia

Kemet International Ltd, Parkwood Trading Estate, Maidstone, Kent ME15 9NJ, United Kingdom
Tel: +44 (0) 1622 755287 Fax: +44 (0) 1622 670915
sales@kemet.co.uk www.kemet.co.uk